

Peter Machajdík



TO THE RAINBOW SO CLOSE AGAIN

[2004]

string quartet
quartetto d'archi
弦樂四重奏

Peter Machajdík

TO THE RAINBOW SO CLOSE AGAIN

(Dúhe znovu tak blízko)

[2004]

string quartet
quartetto d'archi
弦樂四重奏

Awarded the Jan Levoslav Bella Prize 2005

Please send information about any public performance(s) of **TO THE RAINBOW SO CLOSE AGAIN** before the concert(s) to the composer via www.machajdik.com/public.html

Your information about the concert(s) will be put on Peter Machajdik's official website www.machajdik.com

According to the General Terms, and Conditions you need to apply all concert information to the author rights society (performance rights organization) in the country of the public performance of **TO THE RAINBOW SO CLOSE AGAIN** [e.g., GEMA, PRS, ASCAP, BMI, AKM, SIAE, SACEM, CMRRA, SOCAN, BUMA STEMRA, SESAC, SODRAC, SABAM, SUISA, STIM, OSA, TEOSTO, NCB, Koda, TONO, MSG, SPA, IMRO, SOZA, SGAE, ARTISJUS, APRA AMCOS, AMUS, ZAIKS, SOKOJ, HDS-ZAMP, SACM, UCMR-ADA, LATGA, AKKA-LAA, AMUS, AUTODIA, STEF, GEA, EAU, SAZAS, MUSICAUTOR, MESAM, JASRAC 「日本音楽著作権協会」, IPRS, SADAIC, ANCO, ABRAMUS, KOMCA (한국음악저작권협회), UACRR (ΥΑΑCΠ), MESAM, WAMI, FILSCAP, MCSC (中国音乐著作权协会), CASH (香港作曲家及作詞家協會), MACA (作曲家、作家及出版社協會), SAMRO, AGADU, ALBAUTOR, ANCO, VCPMC, UNISON, MACP, MUST (社團法人中華音樂著作權協會), ACUM (ΑΡΙ"Δ), ВОИС, RAO (РАО)].

For a recording of **TO THE RAINBOW SO CLOSE AGAIN** you are kindly requested to send a sample of a sound file to Peter Machajdik via

www.machajdik.com/public.html

Thanks!

For information about the composer, please visit www.machajdik.com

TO THE RAINBOW SO CLOSE AGAIN

DÚHE ZNOVU TAK BLÍZKO

Durata: c. 12'00"

[2004]

Awarded the Jan Levoslav Bella Prize 2005

World premiere: 25 May 2005, Slovak Radio Bratislava, Slovakia
Zwiebel Quartet

Peter Machajdík

*1961

makh.eye.deek

マハイジック

马海迪克

마하이디크

Largo ma non troppo ♩ = ca. 50

Violin 1
Violin 2
Viola
Violoncello

p
gliss.
pp < p
ppp *pp* *p*
pp *gliss.* *p*

VI. I
VI. II
Va.
Vc.

7
sul tasto (flaut.) *ordinario*

12

VI. I *f* *p sub.* *f*

VI. II *f* *p sub.* *f*

Va. *f* *p sub.* *f*

Vc. *f* *p sub.* *f*

15

VI. I *fff*

VI. II *fff*

Va. *fff*

Vc. *fff*

18

VI. I *sub. p*

VI. II *pp* *ord.* *gliss. gliss.*

Va. *pp* *poco* *pp*

Vc. *pp* *pizz.* *p*

25

VI. I

VI. II

Va.

Vc.

arco
gliss.

ppp

13

p

ff

pizz.

ff

pizz.

ff

pizz.

30

VI. I

VI. II

Va.

Vc.

p

arco

p

arco

p

arco

p

37

VI. I

VI. II

Va.

Vc.

3

47

VI. I *fff*

VI. II *fff*

Va. *fff*

Vc. *fff*

52

VI. I

VI. II

Va. *f* *gliss.*

Vc. *f* *gliss.*

58

VI. I *p* pizz.

VI. II *p* pizz. arco pizz.

Va. *p* pizz.

Vc. *p* pizz. arco pizz.

65

VI. I *f* arco

VI. II *mp* arco pizz.

Va. *mp*

Vc. *mp*

69

VI. I *ff* arco

VI. II *ff* arco pizz. *mf*

Va. *ff* arco *fff* pizz. *ff*

Vc. *ff* arco *fff* pizz. *mf*

gliss.

gliss.

gliss.

72

VI. I *mf* arco

VI. II *fff* molto arco

Va. *mf* pizz. *fff* molto arco

Vc. *fff* molto arco

|| Deciso ♩ = 88

76

VI. I

VI. II

Va.

Vc.

gliss.

80

VI. I

VI. II

Va.

Vc.

gliss.

83

VI. I

VI. II

Va.

Vc.

sul ponticello

86 *ordinario*

VI. I

VI. II

Va.

Vc.

90 *Andante* ♩ = 80

VI. I

VI. II

Va.

Vc.

93

VI. I

VI. II

Va.

Vc.

99

VI. I

VI. II

Va.

Vc.

102

VI. I

VI. II

Va.

Vc.

107

Adagio ♩ = 69

VI. I

VI. II

Va.

Vc.

mp

mp

pizz. arco

mp pizz. arco

mp

114

VI. I *fff* *molto arco*

VI. II *fff* *molto arco* *f*

Va. *fff* *molto arco*

Vc. *fff* *molto arco* *f*

119

VI. I

VI. II *fff* *f*

Va.

Vc. *fff* *f*

124

VI. I

VI. II *fff* *f*

Va.

Vc. *fff* *f*

Adagio ♩ = 66

129

VI. I

VI. II

Va.

Vc.

fff

fff

fff

fff

134

VI. I

VI. II

Va.

Vc.

tr

139

VI. I

VI. II

Va.

Vc.

f

pizz.

mp

pizz.

mp

pizz.

mp

145

VI. I

VI. II

Va.

Vc.

arco pizz.

gliss.

arco

arco

gliss.

gliss.

150

III
Largo ♩ = ca. 46

VI. I

VI. II

Va.

Vc.

p

p

p

p

162

VI. I

VI. II

Va.

Vc.

168 sul tasto (flaut.)

VI. I

VI. II sul pont. ord.

Va.

Vc. *pp* *p*

$\text{♩} = 40$
ord.

176

VI. I

VI. II pizz. arco

Va.

Vc.

185

VI. I

VI. II

Va.

Vc.

Berlin, 2004

Please send information about any public performance(s) of **TO THE RAINBOW SO CLOSE AGAIN** before the concert(s) to the composer via www.machajdik.com/public.html

Your information about the concert(s) will be put on Peter Machajdik's official website www.machajdik.com

According to the General Terms, and Conditions you need to apply all concert information to the author rights society (performance rights organization) in the country of the public performance of **TO THE RAINBOW SO CLOSE AGAIN** [e.g., GEMA, PRS, ASCAP, BMI, AKM, SIAE, SACEM, CMRRA, SOCAN, BUMA STEMRA, SESAC, SODRAC, SABAM, SUISA, STIM, OSA, TEOSTO, NCB, Koda, TONO, MSG, SPA, IMRO, SOZA, SGAE, ARTISJUS, APRA AMCOS, AMUS, ZAIKS, SOKOJ, HDS-ZAMP, SACM, UCMR-ADA, LATGA, AKKA-LAA, AMUS, AUTODIA, STEF, GEA, EAU, SAZAS, MUSICAUTOR, JASRAC 「日本音楽著作権協会」, IPRS, SADAIC, ANCO, ABRAMUS, KOMCA (한국음악저작권협회), UACRR (YAACPI), MESAM, WAMI, MCSC (中国音乐著作权协会), CASH (香港作曲家及作词家协会), MACA (作曲家、作家及出版社协会), SAMRO, AGADU, ALBAUTOR, ANCO, VCPMC, FILSCAP, UNISON, MUST (社團法人中華音樂著作権協會), ACUM (αρι"μ), MACP, BOIC, RAO (PAO)].

For a recording of **TO THE RAINBOW SO CLOSE AGAIN** you are kindly requested to send a sample of a sound file to Peter Machajdik via www.machajdik.com/public.html

Thanks!

For information about the composer, please visit www.machajdik.com

TO THE RAINBOW SO CLOSE AGAIN

DÚHE ZNOVU TAK BLÍZKO

Peter Machajdik

Durata: c. 12'00"

2004

*1961

makh.eye.deek

マハイジック

马海迪克

마하이디크

Largo ma non troppo ♩ = ca. 50

Violin 1

8

13

16

22

32

43

51

Copyright © 2004 by Peter Machajdik

(all rights reserved)

GEMA SOZA

www.machajdik.com

58 pizz. *p*

65 arco *f*

70 *ff* *mf* *fff* molto

|| Deciso ♩ = 88 arco

74

79

82 sul ponticello

86 ordinario

91 Andante ♩ = 80

ff *fff*

97 Vln. 1

102

109 Adagio ♩ = 69

mp *fff* molto arco

116

123

130 Adagio ♩ = 66

fff

135

143

f

④

III
Largo ♩ = ca. 46

Vln. 1

148 *f*

157 *p*

166 sul tasto (flaut.)

173 ♩ = 40
ord.

183

Berlin 2004

Please send information about any public performance(s) of **TO THE RAINBOW SO CLOSE AGAIN** before the concert(s) to the composer via www.machajdik.com/public.html

Your information about the concert(s) will be put on Peter Machajdik's official website www.machajdik.com

According to the General Terms, and Conditions you need to apply all concert information to the author rights society (performance rights organization) in the country of the public performance of **TO THE RAINBOW SO CLOSE AGAIN** [e.g., GEMA, PRS, ASCAP, BMI, AKM, SIAE, SACEM, CMRRA, SOCAN, BUMA STEMRA, SESAC, SODRAC, SABAM, SUISA, STIM, OSA, TEOSTO, NCB, Koda, TONO, MSG, SPA, IMRO, SOZA, SGAE, ARTISJUS, APRA AMCOS, AMUS, ZAIKS, SOKOJ, HDS-ZAMP, SACM, UCMR-ADA, LATGA, AKKA-LAA, AMUS, AUTODIA, STEF, GEA, EAU, SAZAS, MUSICAUTOR, JASRAC 「日本音楽著作権協会」, IPRS, SADAIC, ANCO, ABRAMUS, KOMCA (한국음악저작권협회), UACRR (YAACP), MESAM, WAMI, MCSC (中国音乐著作权协会), CASH (香港作曲家及作词家协会), MACA (作曲家、作家及出版社协会), SAMRO, AGADU, ALBAUTOR, ANCO, VCPMC, FILSCAP, UNISON, MUST (社團法人中華音樂著作權協會), ACUM (ΑΓΙ"Μ), MACP, BOIC, RAO (PAO)].

For a recording of **TO THE RAINBOW SO CLOSE AGAIN** you are kindly requested to send a sample of a sound file to Peter Machajdik via www.machajdik.com/public.html

Thanks!

For information about the composer, please visit www.machajdik.com

TO THE RAINBOW SO CLOSE AGAIN

DÚHE ZNOVU TAK BLÍZKO

Peter Machajdík

Durata: c. 12'00"

2004

*1961

makh.eye.deek

マハイジック

马海迪克

마하이디크

Violin 2

1 *gliss.*
pp < *p*

8 *sul tasto (flaut.)* *ordinario*
f

13 *p sub.* *f* *fff*

18 *pp* *gliss.* *gliss.*

26 *p* *pizz.* *ff*

32 *arco* *p*

44 *fff*

52 *pizz.* *p*

Copyright © 2004 by Peter Machajdík

(all rights reserved)

GEMA SOZA

www.machajdik.com

60 arco pizz. *mp* arco

68 pizz. gliss. arco *ff* pizz. *mf* arco *fff* molto

74

79

84

88 *f*

93 *ff*

100

104

mp

113

fff molto arco *f*

119

fff f

126

fff f *fff f* *fff f* *fff* *fff*

132

fff

137

fff

144

pizz. *arco* *pizz.* *gliss.* *arco* *mp*

150

p

162

3
p
sul pont.

171

ord.
pizz.

179

arco

187

p

Berlin, 2004

Please send information about any public performance(s) of **TO THE RAINBOW SO CLOSE AGAIN** before the concert(s) to the composer via www.machajdik.com/public.html

Your information about the concert(s) will be put on Peter Machajdik's official website www.machajdik.com

According to the General Terms, and Conditions you need to apply all concert information to the author rights society (performance rights organization) in the country of the public performance of **TO THE RAINBOW SO CLOSE AGAIN** [e.g., GEMA, PRS, ASCAP, BMI, AKM, SIAE, SACEM, CMRRA, SOCAN, BUMA STEMRA, SESAC, SODRAC, SABAM, SUISA, STIM, OSA, TEOSTO, NCB, Koda, TONO, MSG, SPA, IMRO, SOZA, SGAE, ARTISJUS, APRA AMCOS, AMUS, ZAIKS, SOKOJ, HDS-ZAMP, SACM, UCMR-ADA, LATGA, AKKA-LAA, AMUS, AUTODIA, STEF, GEA, EAU, SAZAS, MUSICAUTOR, JASRAC 「日本音楽著作権協会」, IPRS, SADAIC, ANCO, ABRAMUS, KOMCA (한국음악저작권협회), UACRR (YAACP), MESAM, WAMI, MCSC (中国音乐著作权协会), CASH (香港作曲家及作词家协会), MACA (作曲家、作家及出版社协会), SAMRO, AGADU, ALBAUTOR, ANCO, VCPMC, FILSCAP, UNISON, MUST (社團法人中華音樂著作權協會), ACUM (אקום), MACP, BOIC, RAO (PAO)].

For a recording of **TO THE RAINBOW SO CLOSE AGAIN** you are kindly requested to send a sample of a sound file to Peter Machajdik via www.machajdik.com/public.html

Thanks!

For information about the composer, please visit www.machajdik.com

TO THE RAINBOW SO CLOSE AGAIN

DÚHE ZNOVU TAK BLÍZKO

Peter Machajdík

Durata: c. 12'00"

2004

*1961

makh.eye.deek

マハイジック

马海迪克

마하이디크

Viola

1

7

12

17

24

31

42

50

ppp *pp* *p*

f *p sub.* *f* *fff*

pp *poco* *pp*

pizz.

arco *p*

fff

gliss. *f* *fff*

sul tasto (flaut.) ord.

2

Copyright © 2004 by Peter Machajdík

(all rights reserved)

GEMA SOZA

www.machajdik.com

57 pizz. *p*

65 *mp* gliss. arco *ff* *fff*

71 pizz. *mf* arco *fff* molto

75

80

85

90 *f* pizz. arco *ff*

97

102

108

pizz. arco

mp *fff* molto arco

115

122

130

fff

135

142

pizz. gliss.

mp

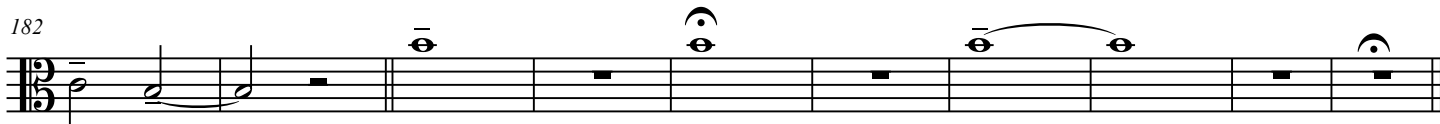
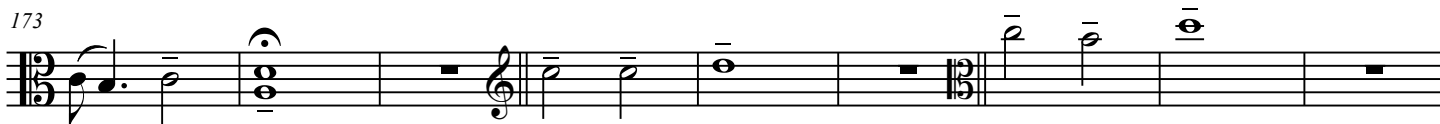
148

arco

p

157

166



Please send information about any public performance(s) of **TO THE RAINBOW SO CLOSE AGAIN** before the concert(s) to the composer via www.machajdik.com/public.html

Your information about the concert(s) will be put on Peter Machajdik's official website www.machajdik.com

According to the General Terms, and Conditions you need to apply all concert information to the author rights society (performance rights organization) in the country of the public performance of **TO THE RAINBOW SO CLOSE AGAIN** [e.g., GEMA, PRS, ASCAP, BMI, AKM, SIAE, SACEM, CMRRA, SOCAN, BUMA STEMRA, SESAC, SODRAC, SABAM, SUIISA, STIM, OSA, TEOSTO, NCB, Koda, TONO, MSG, SPA, IMRO, SOZA, SGAE, ARTISJUS, APRA AMCOS, AMUS, ZAIKS, SOKOJ, HDS-ZAMP, SACM, UCMR-ADA, LATGA, AKKA-LAA, AMUS, AUTODIA, STEF, GEA, EAU, SAZAS, MUSICAUTOR, JASRAC 「日本音楽著作権協会」, IPRS, SADAIC, ANCO, ABRAMUS, KOMCA (한국음악저작권협회), UACRR (YAACP), MESAM, WAMI, MCSC (中国音乐著作权协会), CASH (香港作曲家及作词家協會), MACA (作曲家、作家及出版社協會), SAMRO, AGADU, ALBAUTOR, ANCO, VCPMC, FILSCAP, UNISON, MUST (社團法人中華音樂著作權協會), ACUM (ΑΚΙ"Δ), MACP, BOIC, RAO (PAO)].

For a recording of **TO THE RAINBOW SO CLOSE AGAIN** you are kindly requested to send a sample of a sound file to Peter Machajdik via www.machajdik.com/public.html

Thanks!

For information about the composer, please visit www.machajdik.com

TO THE RAINBOW SO CLOSE AGAIN

DÚHE ZNOVU TAK BLÍZKO

2004

Peter Machajdík

*1961

makh.eye.deek

マハイジック

马海迪克

마하이디크

Durata: c. 12'00"

Violoncello

The musical score for Violoncello consists of eight staves of music. The first staff begins in 4/4 time with a *pp* dynamic and a glissando. The second staff starts at measure 7, changing to 2/4 and then 4/4, with a *f* dynamic. The third staff starts at measure 13, featuring a *p sub.* dynamic, a crescendo to *f*, and a *fff* section with accents. The fourth staff starts at measure 18, with a triplet of eighth notes, a *pp* dynamic, and a *pizz.* section. The fifth staff starts at measure 25, with an *arco gliss.* section, a *ppp* dynamic, and a *fff* section. The sixth staff starts at measure 31, with an *arco* section and a *p* dynamic. The seventh staff starts at measure 43, with a *fff* dynamic and accents. The eighth staff starts at measure 51, with a *f* dynamic, a *fff* section, and a *pizz.* section.

Copyright © 2004 by Peter Machajdík

(all rights reserved)

GEMA SOZA

www.machajdik.com

2
TO THE RAINBOW SO CLOSE AGAIN - violoncello

59 arco pizz. 3 3

66 gliss. arco pizz. mp ff < fff mf

72 arco fff molto

77 gliss. 3

82 6 gliss.

85 6 6 6 3

6 89 V 6 3 pizz. f ff

96 arco V

102 16

109 pizz. arco
mp *fff* molto arco

116
f *fff* *f* *fff* *f*

121
fff *f* *fff* *f* *fff* *f* *fff* *f* *fff* *f*

126
fff *f* *fff* *f* *fff* *f* *fff*

131 *tr*

137

144 pizz. gliss. arco
mp

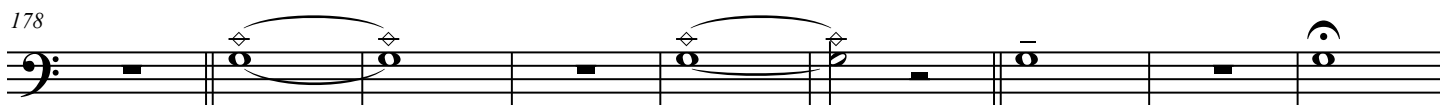
150 *p*

162 *pp*

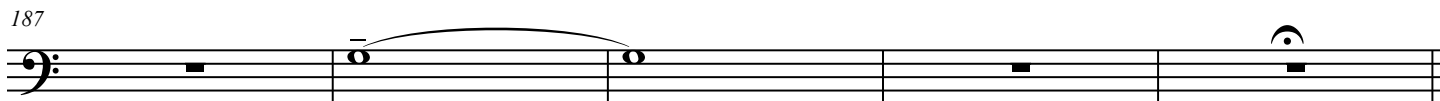
170



178



187



Berlin, 2004

Please send information about any public performance(s) of **TO THE RAINBOW SO CLOSE AGAIN** before the concert(s) to the composer via www.machajdik.com/public.html

Your information about the concert(s) will be put on Peter Machajdik's official website www.machajdik.com

According to the General Terms, and Conditions you need to apply all concert information to the author rights society (performance rights organization) in the country of the public performance of **TO THE RAINBOW SO CLOSE AGAIN** [e.g., GEMA, PRS, ASCAP, BMI, AKM, SIAE, SACEM, CMRRA, SOCAN, BUMA STEMRA, SESAC, SODRAC, SABAM, SUIA, STIM, OSA, TEOSTO, NCB, Koda, TONO, MSG, SPA, IMRO, SOZA, SGAE, ARTISJUS, APRA AMCOS, AMUS, ZAIKS, SOKOJ, HDS-ZAMP, SACM, UCMR-ADA, LATGA, AKKA-LAA, AMUS, AUTODIA, STEF, GEA, EAU, SAZAS, MUSICAUTOR, JASRAC 「日本音楽著作権協会」, IPRS, SADAIC, ANCO, ABRAMUS, KOMCA (한국음악저작권협회), UACRR (YAACP), MESAM, WAMI, MCSC (中国音乐著作权协会), CASH (香港作曲家及作词家协会), MACA (作曲家、作家及出版社協會), SAMRO, AGADU, ALBAUTOR, ANCO, VCPMC, FILSCAP, UNISON, MUST (社團法人中華音樂著作権協會), ACUM (אקום), MACP, БОИС, RAO (РАО)].

For a recording of **TO THE RAINBOW SO CLOSE AGAIN** you are kindly requested to send a sample of a sound file to Peter Machajdik via www.machajdik.com/public.html

Thanks!

For information about the composer, please visit www.machajdik.com